

AGE FRIENDLY GUELPH

"GUELPH IS A GREAT PLACE TO LIVE AND AGE WELL"

VISION

Guelph is an age-friendly community that:

- values and supports older adults
- optimizes opportunity for choice, independence, and quality of life
- celebrates diversity
- is inclusive of all, reducing inequities

GUIDING PRINCIPLES

The City of Guelph will ensure that all services, policies and programs are designed, delivered and resourced, where feasible, using the following guiding values and principles:

- participation and inclusion of all citizens
- respect and dignity
- active engagement in communication and decision making
- access to a safe living environment
- fairness and equity
- self determination and choice

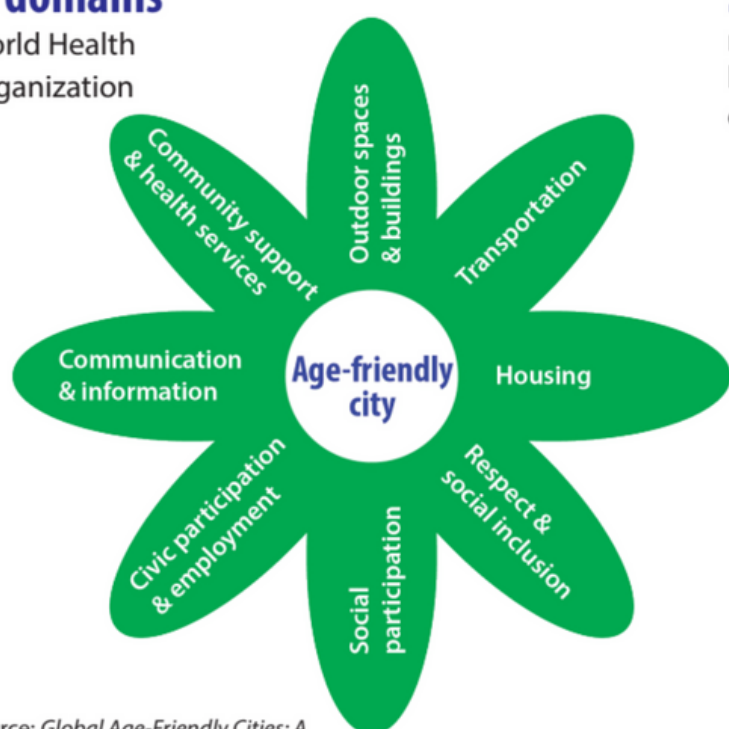
CURRENT PROJECTS

- The Bench Project
- The Gatekeeper Project
- Reflections on Aging
- Age Friendly Businesses
- Resources on the Go!

AGE FRIENDLY DIMENSIONS

8 domains

World Health Organization



Source: *Global Age-Friendly Cities: A Guide*. World Health Organization, 2007.

20 of 64

recommendations have been acted on so far

