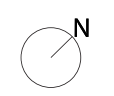
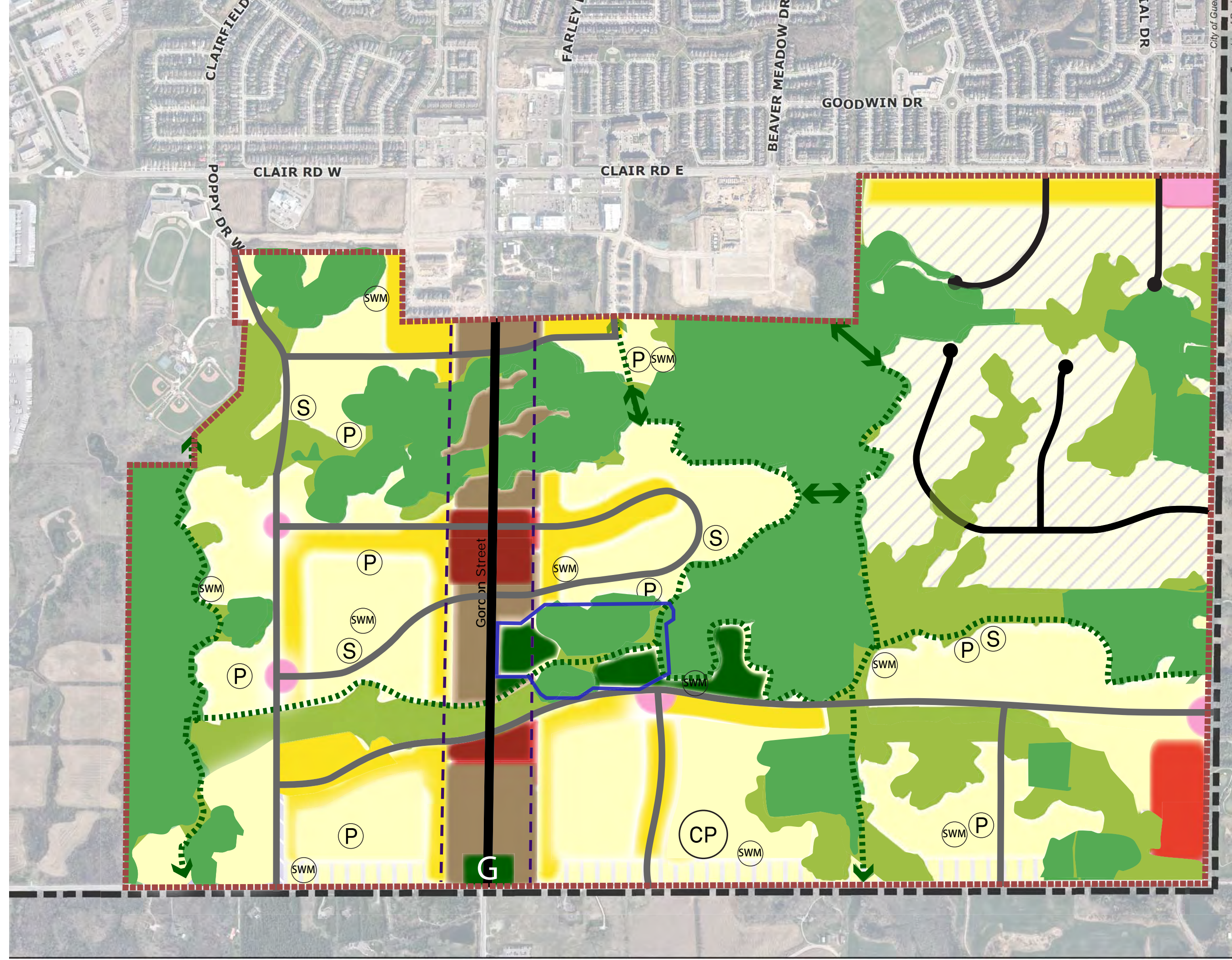


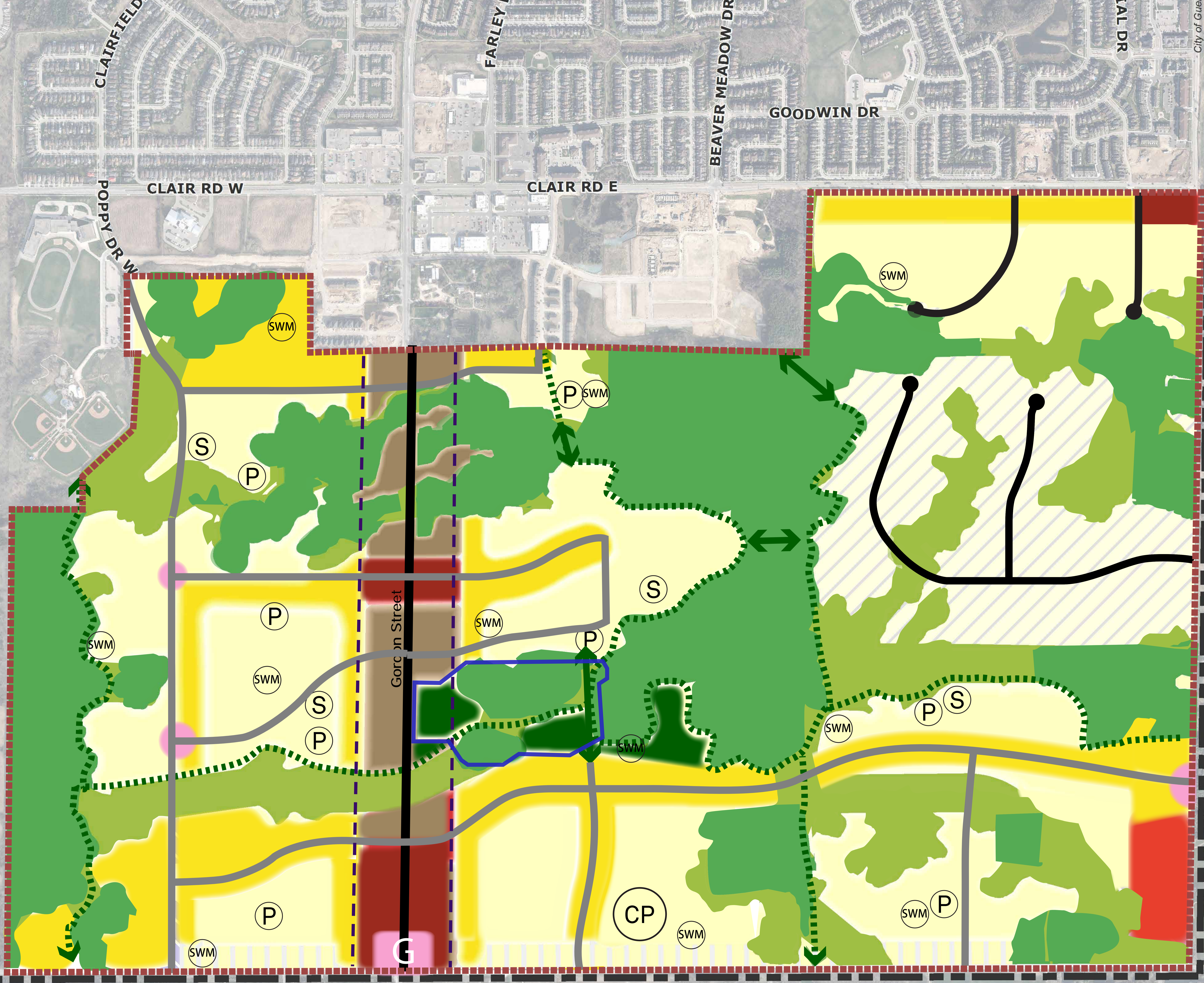
Clair-Maltby Conceptual Community Structure Alternative 1: Featuring the Green

- Legend**
- Clair-Maltby Secondary Plan Boundary
 - Cultural Heritage Landscape
 - Urban-Rural Transition Zone
 - Gordon St. Corridor
 - Existing Street Network
 - Proposed Street and Cycling Network
 - Potential Street Connection
 - Proposed Trail Network
 - Potential Active Transportation Link
 - Neighbourhood Park
 - Community Park
 - Elementary School
 - Stormwater Management
 - Gateway
- Natural Heritage System**
- May Permit Essential Transportation Infrastructure
 - Does Not Permit Transportation Infrastructure
- Land Use**
- Low Density (Residential)
 - Medium Density (Residential)
 - High Density (Residential)
 - Mixed Use
 - Neighbourhood Commercial
 - Service Commercial
 - Rolling Hills Residential
 - Open Space



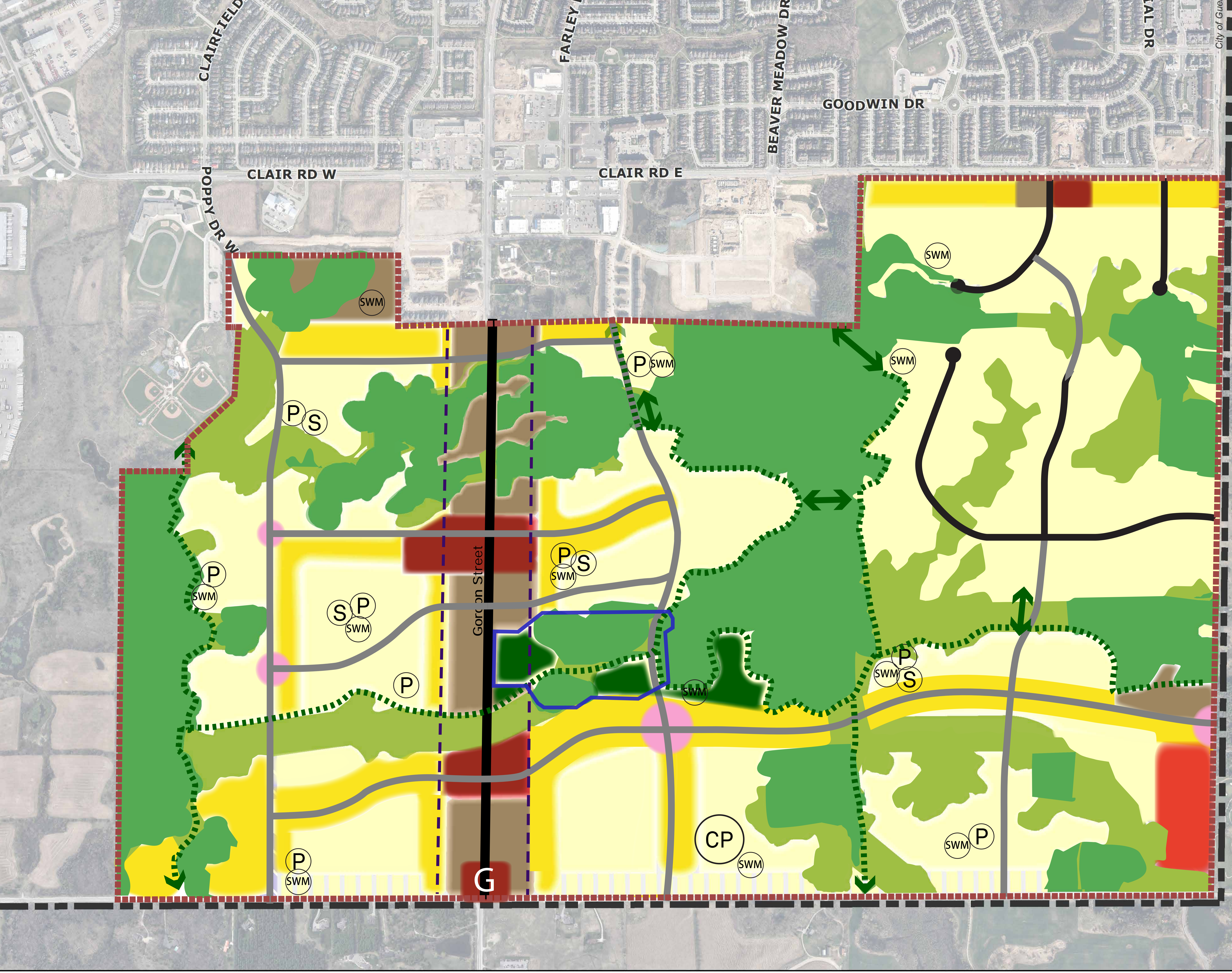
Clair-Maltby Conceptual Community Structure Alternative 2: Focus on Community Services

- Legend**
- Clair-Maltby Secondary Plan Boundary
 - Cultural Heritage Landscape
 - Urban-Rural Transition Zone
 - Gordon St. Corridor
 - Existing Street Network
 - Proposed Street and Cycling Network
 - Potential Street Connection
 - Proposed Trail Network
 - Potential Active Transportation Link
 - Neighbourhood Park
 - Community Park
 - Elementary School
 - Stormwater Management
 - Gateway
- Natural Heritage System**
- May Permit Essential Transportation Infrastructure
 - Does Not Permit Transportation Infrastructure
- Land Use**
- Low Density (Residential)
 - Medium Density (Residential)
 - High Density (Residential)
 - Mixed Use
 - Neighbourhood Commercial
 - Service Commercial
 - Rolling Hills Residential
 - Open Space



City of Guelph
Township of Pushtan

Clair-Maltby Conceptual Community Structure Alternative 3: Connected and Urban



- Legend**
- Clair-Maltby Secondary Plan Boundary
 - Cultural Heritage Landscape
 - Urban-Rural Transition Zone
 - Gordon St. Corridor
 - Existing Street Network
 - Proposed Street and Cycling Network
 - Potential Street Connection
 - Proposed Trail Network
 - Potential Active Transportation Link
 - Neighbourhood Park
 - Community Park
 - Elementary School
 - Stormwater Management
 - Gateway
- Natural Heritage System**
- May Permit Essential Transportation Infrastructure
 - Does Not Permit Transportation Infrastructure
- Land Use**
- Low Density (Residential)
 - Medium Density (Residential)
 - High Density (Residential)
 - Mixed Use
 - Neighbourhood Commercial
 - Service Commercial
 - Rolling Hills Residential
 - Open Space

